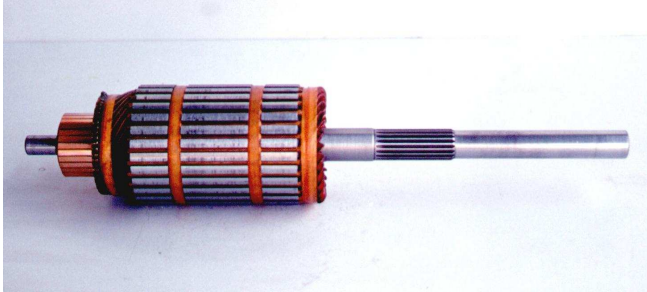


MOTOR DE ARRANQUE

INDUCIDOS



REF.ORIGINAL
16-388 A,
MBD2473A,NFY6201 A,6201 I,6201K,6401 I,
6401K,6401L,6402.
L:443 D:79'4 L.ESTRIADO:59 N°ESTRIAS:19 N°DELGAS:29

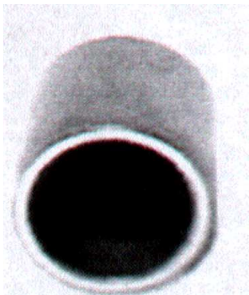
FYRECO
43129



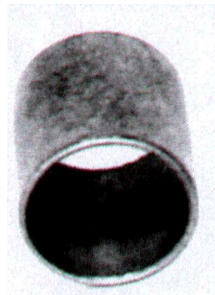
REF.ORIGINAL
16-385,MES2105.
PARA ARRANQUES:
MES 6101K,6301K,6404K,6404L,6405D,6406L
L:473 D:79'3 L.ESTRIADO:54 N°ESTRIAS:19 N°DELGAS:25 24V.

FYRECO
43131

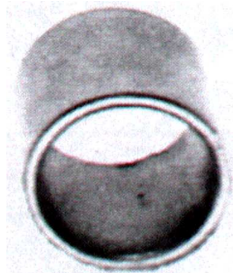
CASQUILLOS



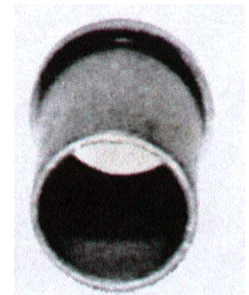
REF.ORIGINAL **FYRECO**
24-15 **CPRE-15**
PARA ARRANQUES: MFY.
MEDIDAS: 13'5X16'7X23'6



REF.ORIGINAL **FYRECO**
24-21 **CPRE-21**
PARA ARRANQUES: MES/MFY
MEDIDAS: 22'3X25'5X25'4

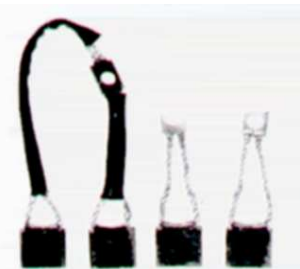


REF.ORIGINAL **FYRECO**
24-3 **CPRE-3**
PARA ARRANQUES: MES.
MEDIDAS: 15'9X19'1X25

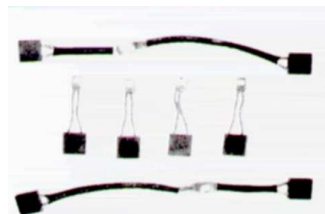


REF.ORIGINAL **FYRECO**
24-72 **CPRE-72**
PARA ARRANQUES: MES/MFY.
MEDIDAS: 19'1X22'2X25'4

ESCOBILLAS



REF.ORIGINAL **FYRECO**
17-162 **EPRE-162**
MEDIDAS: 9'5X19X19 24V.



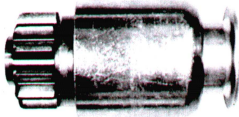
REF.ORIGINAL **FYRECO**
17-168 **EPRE-168**
MEDIDAS: 9'5X19X19 24V.

AUTOMATICOS

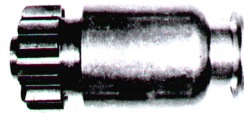


REF.ORIGINAL FYRECO
15-258,412,21. APRE-258
Caterpillar.

PIÑONES



REF.ORIGINAL FYRECO
PD-71,59-186. PIPRE-186
L: 120 D.DIENTES: 46°5
NºDIENTES: 12
NºESTRIAS INT: 19
D.INTERIOR: 19



REF.ORIGINAL FYRECO
PD-8 A,59-203. PIPRE-203
L: 120 D.DIENTES: 56°6
NºDIENTES: 11
NºESTRIAS INT: 19
D.INTERIOR: 19